



KEYPOINT

17-23 High Street | Slough | SL1 1DY



**DEDICATED
MEETING
ROOMS**



**T-POINT
YOUR PLACE
TO MEET
AND GREET**





KEY POINTS



CONCIERGE
RECEPTION



DEDICATED MEETING
ROOMS WITH WIFI



COFFEE POD



CONTEMPORARY
BUSINESS LOUNGE AND
COLLABORATION SPACE



FULLY FURNISHED
WORK READY SPACE
AVAILABLE



INSTANT FIBRE
CONNECTIVITY



EXCELLENT CAR PARKING
RATIO OF 1:424 SQ FT



24 CYCLE SPACES WITH
CYCLE REPAIR STATION



NEW SHOWER AND
CHANGING FACILITIES



2 × REFURBISHED
PASSENGER LIFTS



NEW SUSPENDED
CEILINGS WITH FLAT
PANEL LED LIGHTING



FULLY ACCESSED
RAISED FLOORS



MALE, FEMALE AND
DISABLED FACILITIES



EPC 'B'



NEW VRF AIR
CONDITIONING SYSTEM





THE KEY AREAS

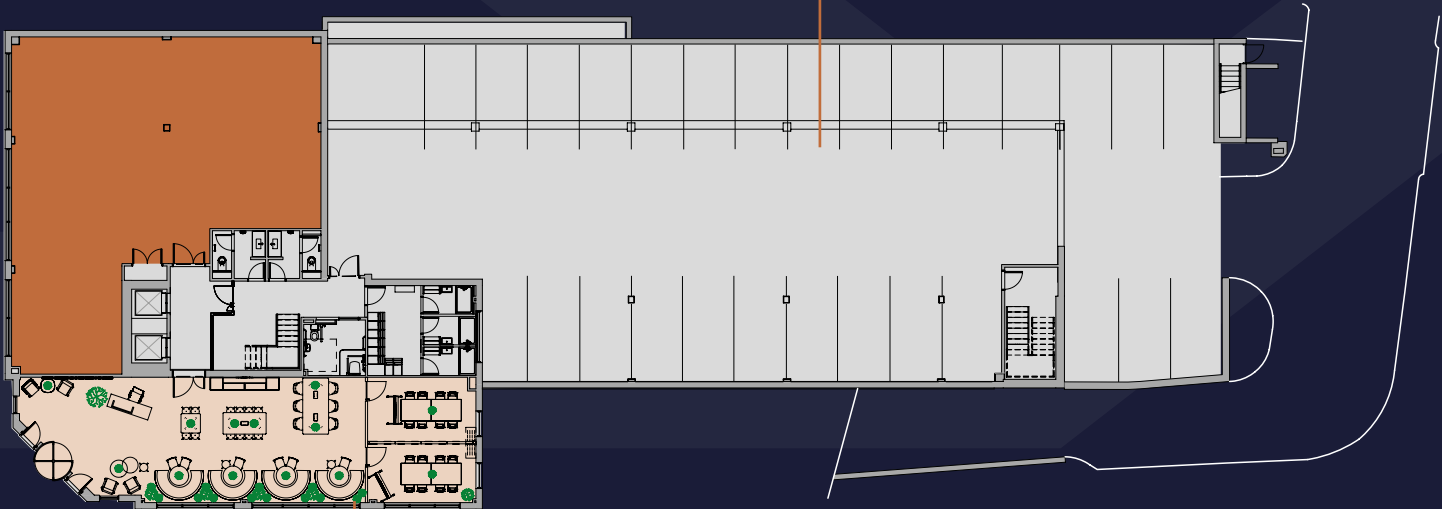
Keypoint is a striking, prominent and high quality office building, located close to town centre amenities and transport links.

Styled with brick elevations and large feature windows, its large glazed entrance leads to a newly extended reception, corporate business lounge and collaboration space designed as an additional meeting point.

Keypoint offers flexible floorplates accommodating between 100 and 30,000 sq ft with good onsite parking at a ratio of 1:424 sq ft.

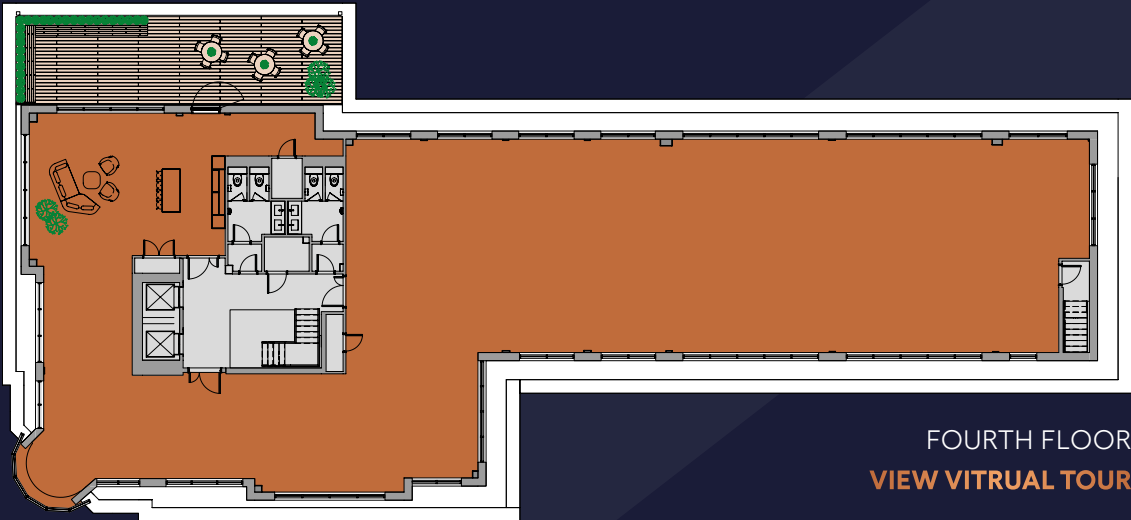
FLOOR	SQ FT	SQ M
PART FOURTH	3,250	302
THIRD	7,341	682
SECOND	7,341	682
FIRST	6,915	642
GROUND	1,857	173

ONSITE PARKING
RATIO 1:424 SQ FT

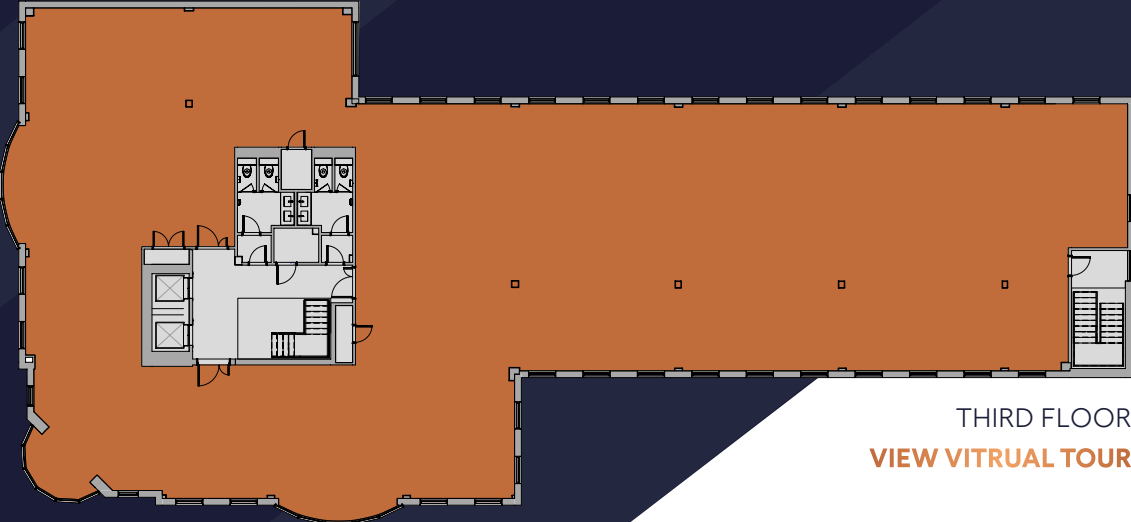


GROUND FLOOR
VIEW VITRUAL TOUR

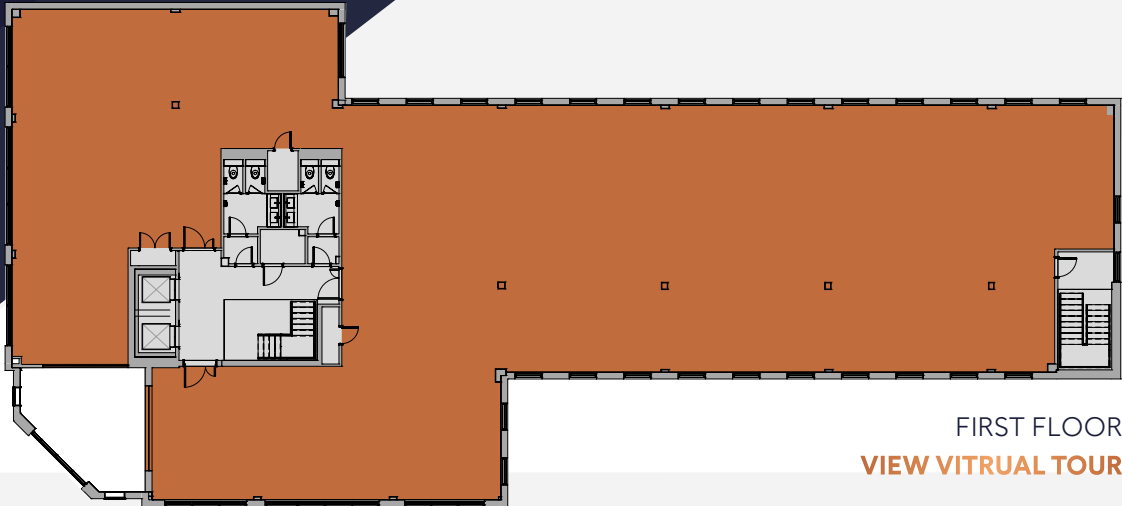
CONTEMPORARY
BUSINESS LOUNGE AND
COLLABORATION SPACE



FOURTH FLOOR
VIEW VITRUAL TOUR



THIRD FLOOR
VIEW VITRUAL TOUR



FIRST FLOOR
VIEW VITRUAL TOUR



**24 CYCLE
SPACES
WITH CYCLE
REPAIR
STATION**



**SHOWERS/
CHANGING
ROOMS WITH
LOCKER
FACILITIES**





POINTS TALLY

4,600

THRIVING BUSINESSES
ARE BASED IN SLOUGH

42

OPEN PARKS AND
SPACES FOR EXERCISE
AND RELAXATION

1st

FOR PRODUCTIVITY
IN THE UK*

1st

SLOUGH HAS THE
MOST GLOBAL
CORPORATE HQs
OUTSIDE LONDON.

2nd

HIGHEST START-UP
RATE IN THE UK

8th

IN EUROPE
FOR BUSINESS
FRIENDLINESS

£9bn

SLOUGH HAS A
BOOMING £9 BILLION
LOCAL ECONOMY

£1.5bn+

BEING INVESTED IN
REGENERATION ACROSS
THE BOROUGH

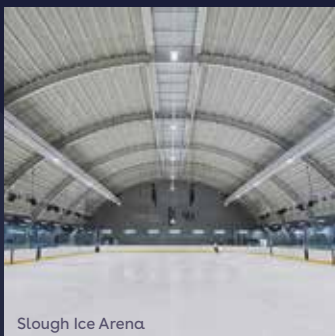
*Centre for Cities, 'The role of place in the UK's productivity puzzle' (2017)



- | | | | |
|---|---|----|--|
| 1 | Burlington Road Car Park | 6 | Travelodge and Buzz Gym |
| 2 | Thames Valley University regeneration site, including 1,400 new homes | 7 | Holiday Inn Express |
| 3 | Moxy Marriot Hotel (opening early 2021) | 8 | Tesco's Extra |
| 4 | Slough Bus Station | 9 | Queensmere Observatory Shopping Centre |
| 5 | The Curve Cultural Centre | 10 | Premier Inn |



The River Thames, Windsor



Slough Ice Arena



Slough High Street



Rowing at Dorney Lake



Browns Brasserie & Bar, Windsor



Côte Brasserie, Windsor



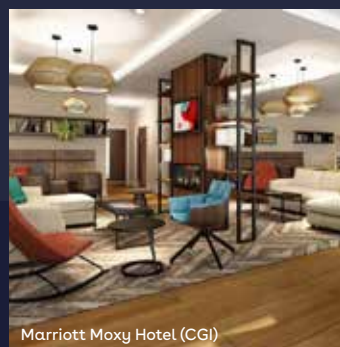
Herschel Park



Ascot Racecourse



Crowd during Harry and Megan's royal wedding, Windsor



Marriott Moxy Hotel (CGI)



Marriott Moxy Hotel (CGI)

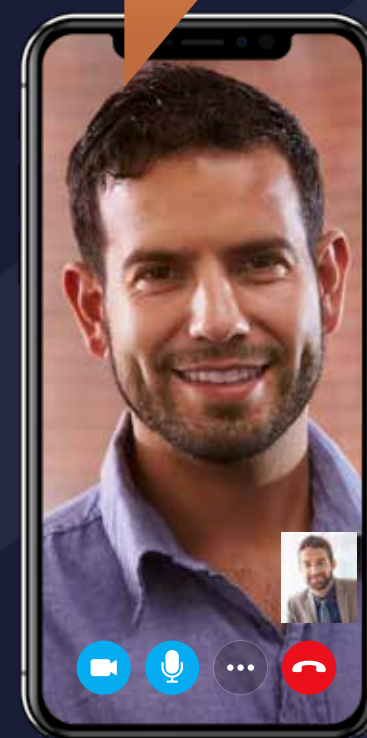


Outdoor exercise equipment

Slough is changing fast, and with it the range of businesses it attracts. Here are the kinds of companies we see moving in:

THE MOVER

We've been based in London for 20 years. Rising rents and cost of housing are making London unsustainable. Now that the Elizabeth line is on the horizon it's time for us to consider alternative locations.



THE RISER

We've been working from serviced offices since we started out in 2014. With our business growing by 10% each year, we need offices that express our brand personality.



THE HIGH FLYER

With offices in Israel, the USA and the UK, our people have to be able to catch a flight at very short notice. Heathrow is only 19 minutes drive away and will soon be even closer. Slough is a great location for the business traveller.

SLOUGH VOTED THE BEST PLACE TO WORK IN THE UK*

Slough is a well-established business hub in the Thames Valley. It provides a base for some of the world's leading brands and stands as the second most successful place nationwide for start-ups. Here is a selection of businesses who have located their headquarters in Slough:

StanleyBlack&Decker

O₂IPSEN
innovation for patient care

fiserv.

LEGO

Reckitt
Benckiser

AkzoNobel

SEGRO

orange

Lonza

KP

McAfee

FIAT

LeasePlan

htc

RIGHT
UP YOUR
STREET



POINT TO POINT

Situated on the M4 motorway between junctions 5, 6 and 7, Slough is one of the Thames Valley’s most well connected towns. Keypoint is just a 7 minute walk from Slough train station which currently provides links to London Paddington in 16 minutes.

The Elizabeth line offers further links to central London, the City and the East of London.

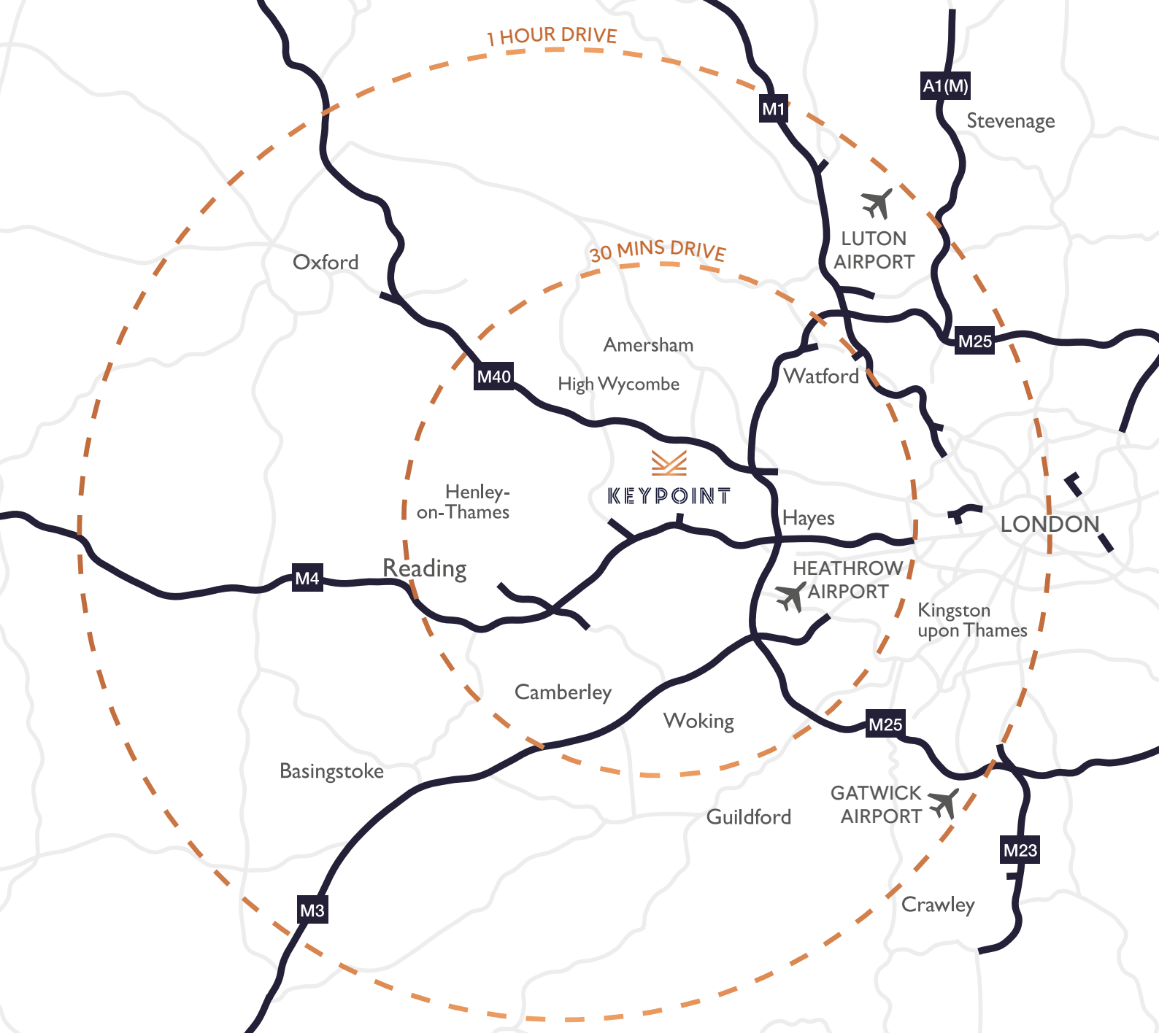
With Heathrow Airport less than a 20 minute commute, Keypoint is superbly located for international travel.

TRAINS TO LONDON PADDINGTON UP TO EVERY 6 MINUTES



HEATHROW AIRPORT A 19 MINUTE DRIVE

MORE THAN 70 BICYCLES AVAILABLE TO HIRE



OXFORD
42 MINS

READING
15 MINS

**WINDSOR
& ETON**
8 MINS



**LONDON
PADDINGTON**
19 MINS

**HEATHROW
AIRPORT**
36 MINS

**GATWICK
AIRPORT**
90 MINS

BIRMINGHAM
102 MILES

BRISTOL
97 MILES

M4 (J6)
2 MILES



M25 (J16)
5 MILES

**HEATHROW
AIRPORT T5**
7 MILES

**CENTRAL
LONDON**
22 MILES

READING
22 MINS

TWYFORD
15 MINS

MAIDENHEAD
8 MINS



**TOTTENHAM
COURT ROAD**
32 MINS

**LIVERPOOL
STREET**
38 MINS

**CANARY
WHARF**
46 MINS

keypoint-slough.co.uk



**Vail
Williams**

0118 909 7400
vailwilliams.com

Guy Parkes
07788 188874
gparkes@vailwilliams.com

Andrew Baillie
07502 233770
abaillie@vailwilliams.com

Owned and managed by



Paul Fitzsimmons
07392 879 281
paul.fitzsimmons@senecaproperty.com